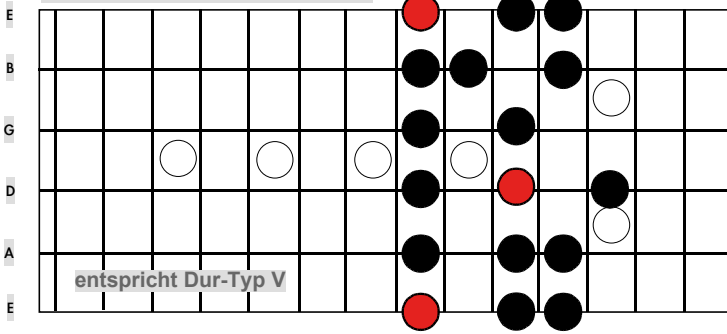


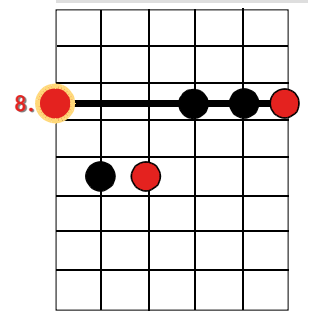
HEPTATONIK

- Die Fingersätze der Siebentonleiter am Beispiel der Tonart C Moll(reines Moll/äolisch) -

Moll-Skalen Typ I (Em-Form)

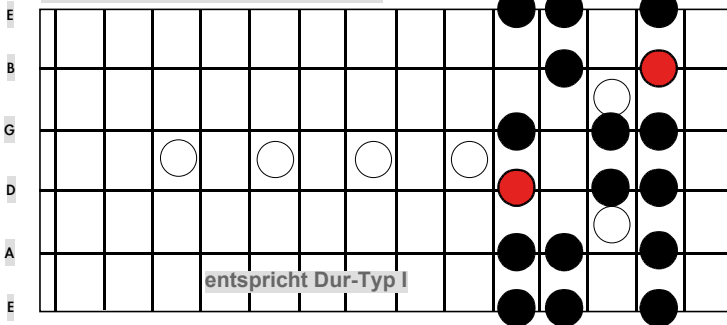


Moll Akkord - Typ I (Em-Form)

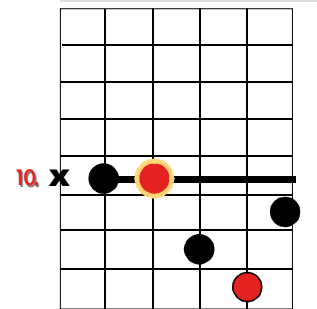


I

Moll-Skalen Typ II (Dm-Form)

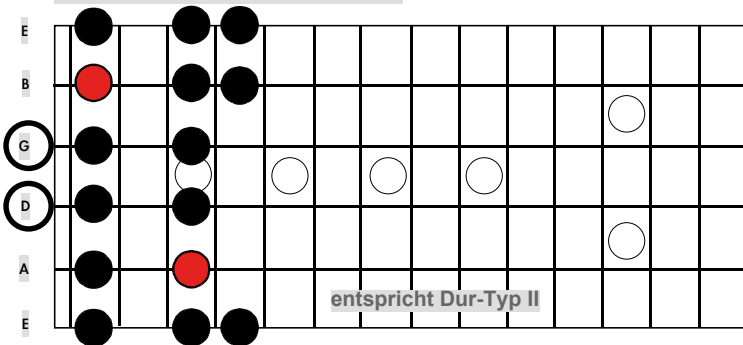


Moll Akkord - Typ II (Dm-Form)

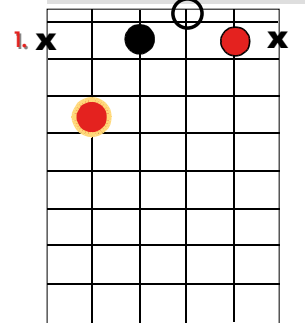


II

Moll-Skalen Typ III (Cm-Form)

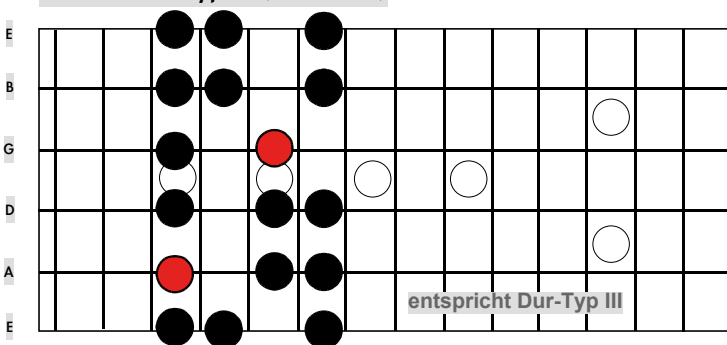


Moll Akkord - Typ III (Cm-Form)

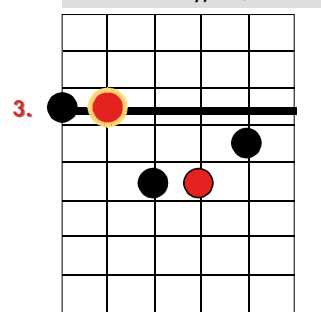


III

Moll-Skalen Typ IV (Am-Form)

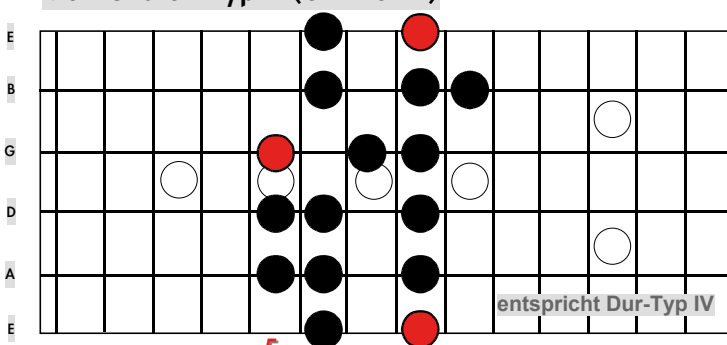


Moll Akkord - Typ IV (Am-Form)

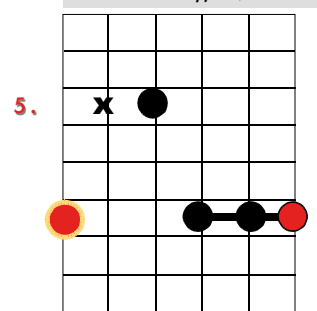


IV

Moll-Skalen Typ V (Gm-Form)



Moll Akkord - Typ V (Gm-Form)



V

● = empfohlener tiefster (Grund-)Ton im Akkord