

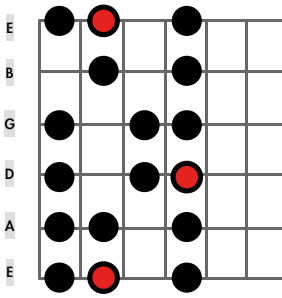
# HEPTATONIK

**Dur** (ionisch)

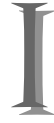
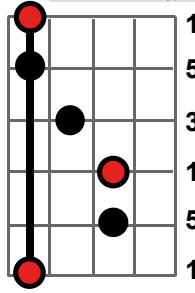
- Die Siebentonleiter in absoluten Fingersätzen -

reines **Moll** (äolisch)

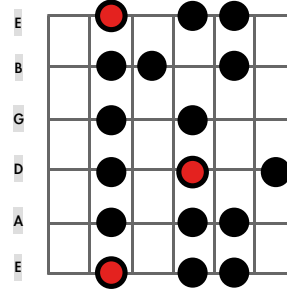
**Dur-Skalen Typ I (E-Form)**



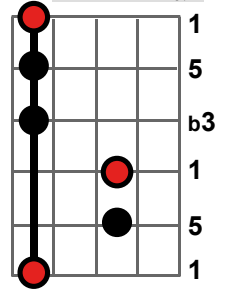
**Dur-Akkord Typ I**



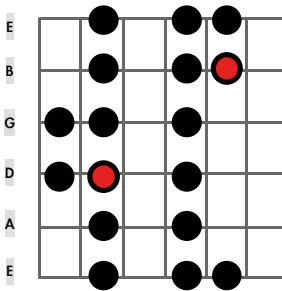
**Moll-Skalen Typ I (Em-Form)**



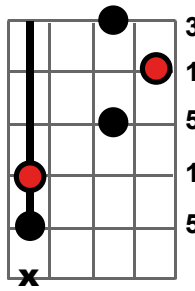
**Moll-Akkord Typ I**



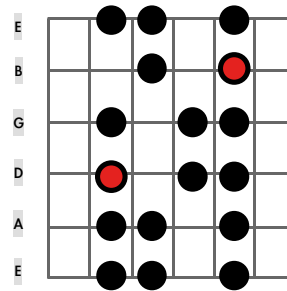
**Dur-Skalen Typ II (D-Form)**



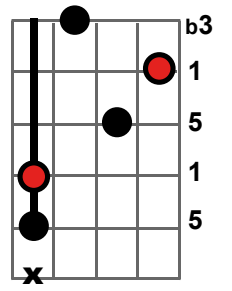
**Dur-Akkord Typ II**



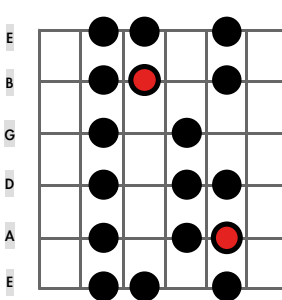
**Moll-Skalen Typ II (Dm-Form)**



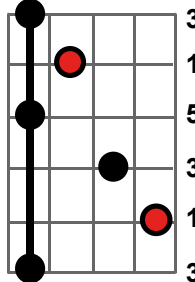
**Moll-Akkord Typ II**



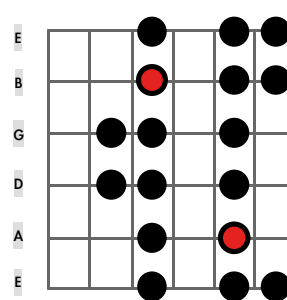
**Dur-Skalen Typ III (C-Form)**



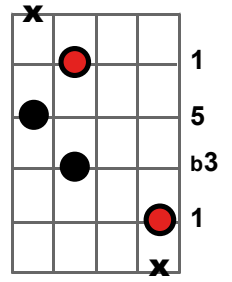
**Dur-Akkord Typ III**



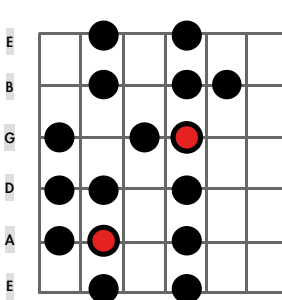
**Moll-Skalen Typ III (Cm-Form)**



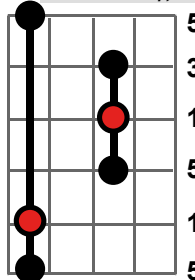
**Moll-Akkord Typ III**



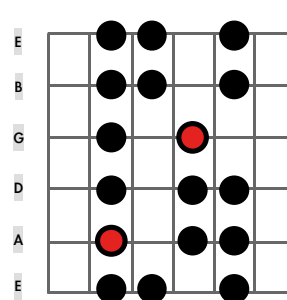
**Dur-Skalen Typ IV (A-Form)**



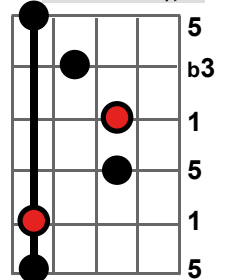
**Dur-Akkord Typ IV**



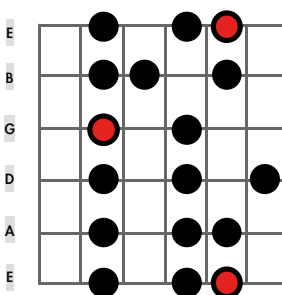
**Moll-Skalen Typ IV (Am-Form)**



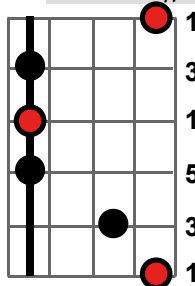
**Moll-Akkord Typ IV**



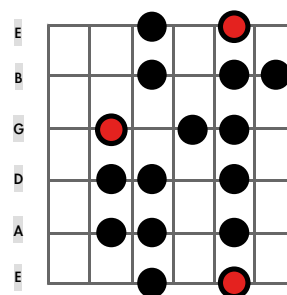
**Dur-Skalen Typ V (G-Form)**



**Dur-Akkord Typ V**



**Moll-Skalen Typ V (Gm-Form)**



**Moll-Akkord Typ V**

