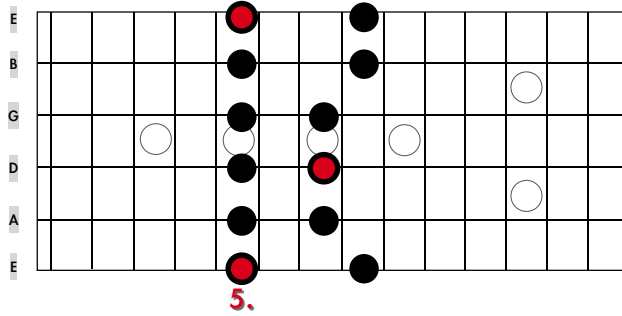


# PENTATONIK

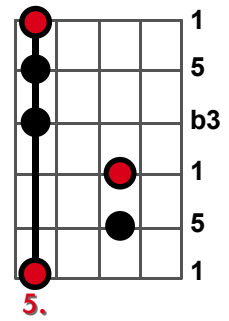
- Die Fingersätze der Fünfftonleiter am Beispiel der Tonart A Moll -

I

Moll-Skalen Typ I (Em-Form)

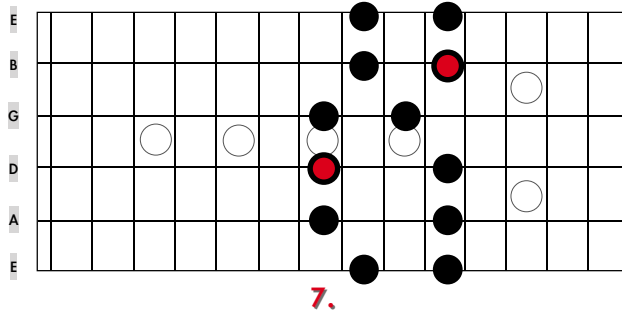


Moll-Akkord Typ I

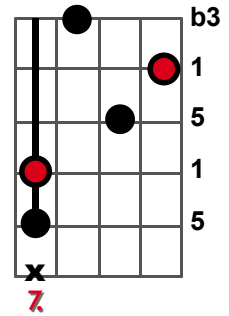


II

Moll-Skalen Typ II (Dm-Form)

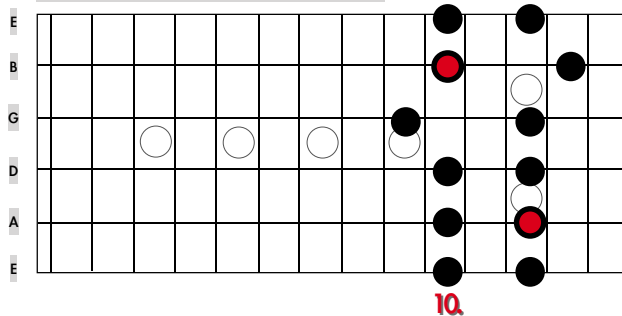


Moll-Akkord Typ II

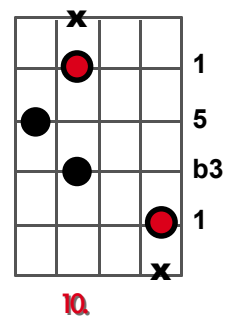


III

Moll-Skalen Typ III (Cm-Form)

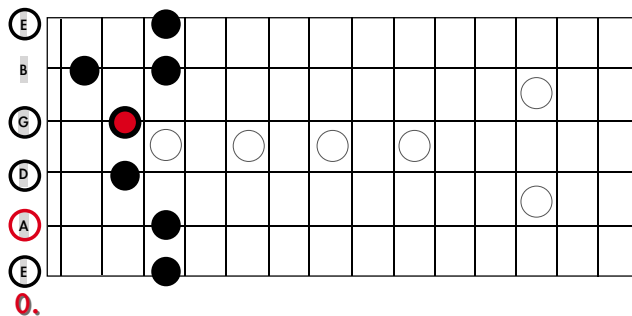


Moll-Akkord Typ III

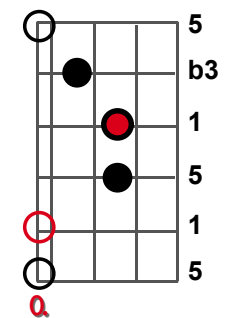


IV

Moll-Skalen Typ IV (Am-Form)

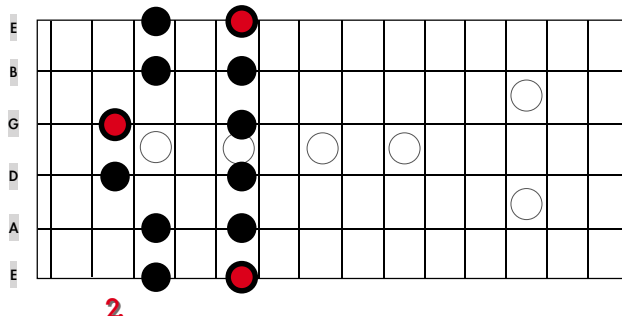


Moll-Akkord Typ IV



V

Moll-Skalen Typ V (Gm-Form)



Moll-Akkord Typ V

