

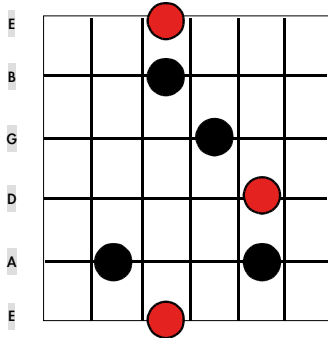
# Dur

# Arpeggios

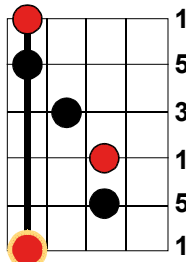
# Moll

- absolute Fingersätze der Dreiklänge in Dur und Moll -

## Dur-Arpeggio Typ I (E-Form)

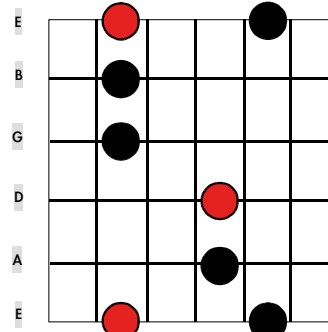


Dur-Akkord Typ I

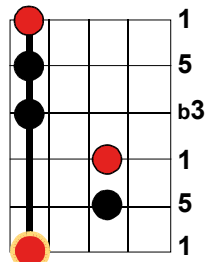


# I

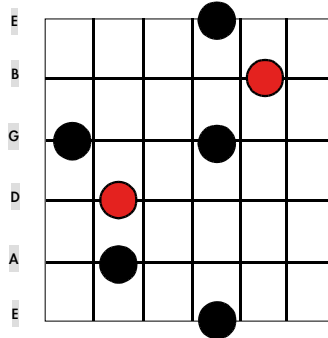
## Moll-Arpeggio Typ I (Em-Form)



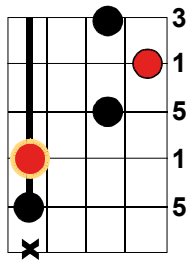
Moll-Akkord Typ I



## Dur-Skalen Typ II (D-Form)

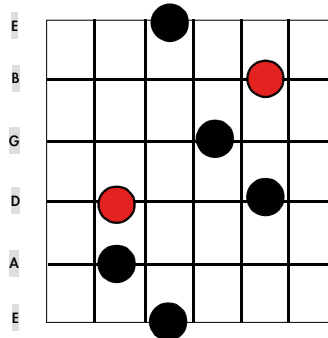


Dur-Akkord Typ II

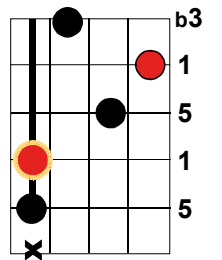


# II

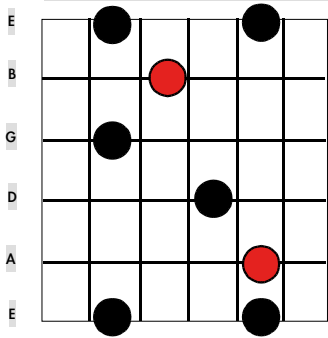
## Moll-Arpeggio Typ II (Dm-Form)



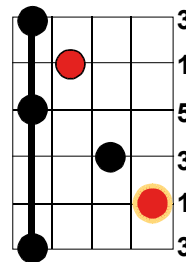
Moll-Akkord Typ II



## Dur-Arpeggio Typ III (C-Form)

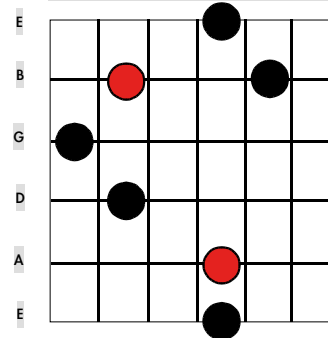


Dur-Akkord Typ III

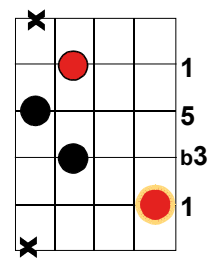


# III

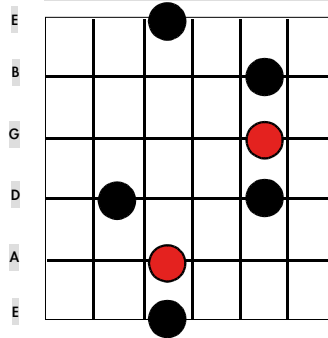
## Moll-Arpeggio Typ III (Cm-Form)



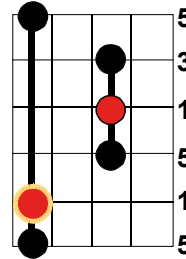
Moll-Akkord Typ III



## Dur-Arpeggio Typ IV (A-Form)

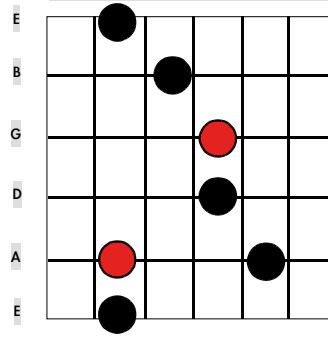


Dur-Akkord Typ IV

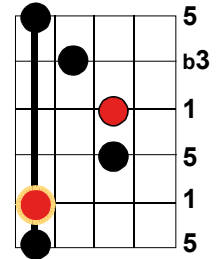


# IV

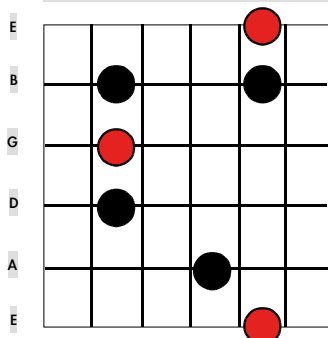
## Moll-Arpeggio Typ IV (Am-Form)



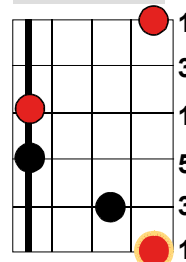
Moll-Akkord Typ IV



## Dur-Arpeggio Typ V (G-Form)

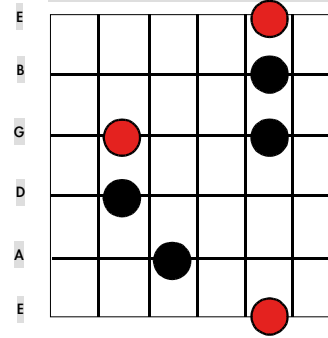


Dur-Akkord Typ V



# V

## Moll-Arpeggio Typ V (Gm-Form)



Moll-Akkord Typ V

