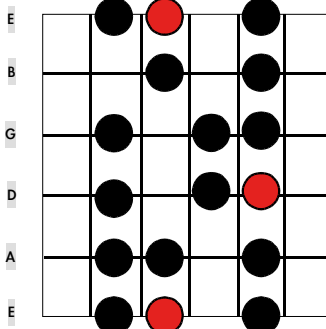


# HEPTATONIK

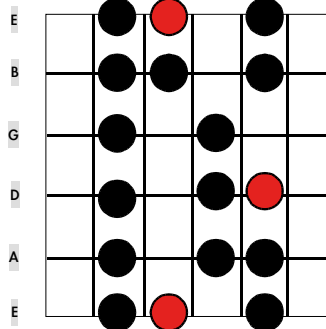
- absolute Fingersätze der Dur-Skalen -

I

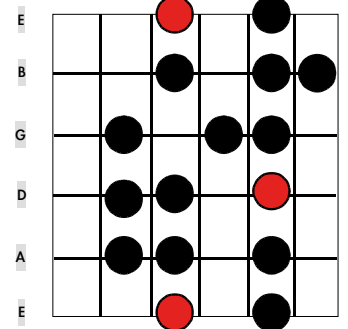
**Ionisch 1.Modus (Dur Typ I)**



**Lydisch 4.Modus (Dur Typ III)**

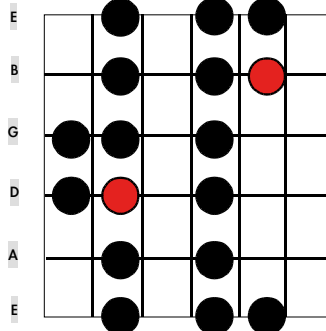


**Mixolydisch 5.Modus (Dur Typ IV)**

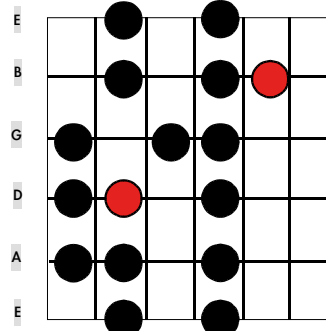


II

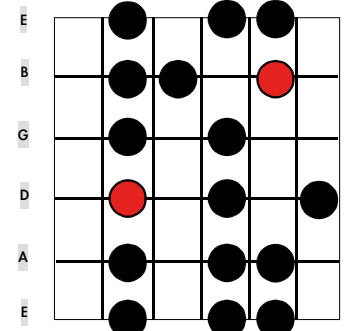
**Ionisch 1.Modus (Dur Typ II)**



**Lydisch 4.Modus (Dur Typ IV)**

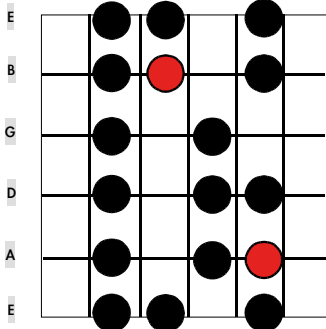


**Mixolydisch 5.Modus (Dur Typ V)**

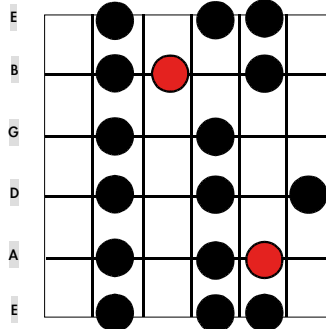


III

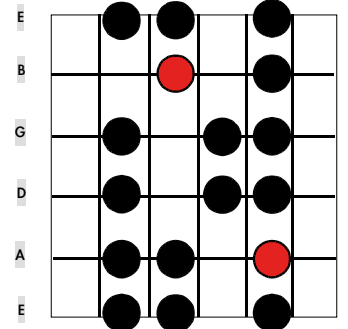
**Ionisch 1.Modus (Dur Typ III)**



**Lydisch 4.Modus (Dur Typ V)**

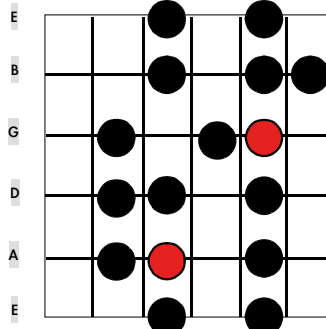


**Mixolydisch 5.Modus (Dur Typ I)**

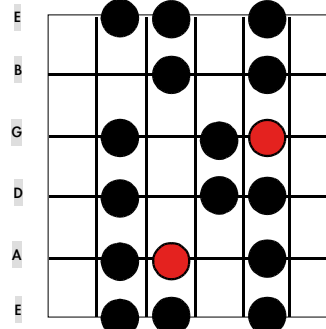


IV

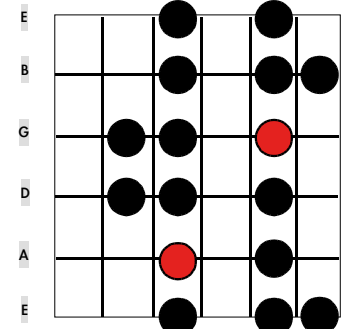
**Ionisch 1.Modus (Dur Typ IV)**



**Lydisch 4.Modus (Dur Typ I)**

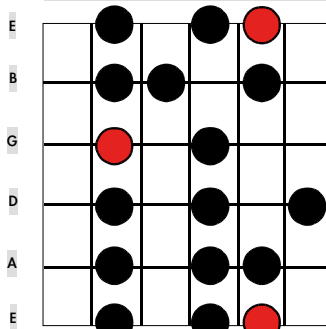


**Mixolydisch 5.Modus (Dur Typ II)**

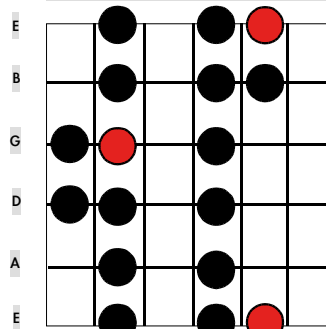


V

**Ionisch 1.Modus (Dur Typ V)**



**Lydisch 4.Modus (Dur Typ II)**



**Mixolydisch 5.Modus (Dur Typ III)**

